

Property type : Apartment

Location : Torrevieja

Bedrooms : 1

Bathrooms : 1

Swimming pool : Communal

Parking : Private parking

Built surface : 61 m²

✓ Lift

✓ Pre-air conditioning

Modern Apartments Just 250m from El Cura Beach in Torrevieja

New Development in Prime Location

This newly built apartment building is located just 250 meters from the famous El Cura Beach in Torrevieja, offering residents easy access to one of the most popular beaches in the area. The building consists of 17 units, featuring 1 and 2-bedroom apartments, each with 1 or 2 bathrooms. Additionally, there are penthouses available with private solariums and stunning sea views, perfect for enjoying the Mediterranean lifestyle.

Premium Amenities for Relaxation

Residents can take advantage of the rooftop community pool and solarium, ideal for unwinding after a day at the beach. The building also offers optional underground parking spaces and storage rooms, available for an additional cost, providing extra convenience and security for residents.

Vibrant City Life in Torrevieja

Torrevieja is a lively city known for its year-round cultural and recreational activities, making it a great destination for both permanent residents and vacationers. With a mild climate and over 300 days of sunshine annually, the area is perfect for those who enjoy outdoor activities and beach life.

Ideal Location with Easy Access to Points of Interest

This property is ideally located close to all essential services, including supermarkets, restaurants, and entertainment venues. Major points of interest are easily accessible:

Alicante Airport is just 45 km away.
Several Golf Courses within 7-10 km.
Zenia Boulevard Shopping Center is only 8 km away.
The port of Torrevieja is just 2 km from the building.

Enjoy modern living by the sea in a vibrant and well-connected area with everything you need just a short distance away.
info@cycinmoasores.es

www.cycinmoasores.com

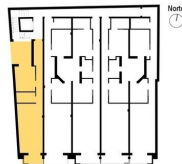
+34 965 067 334





1ºA

SUPERFICIE DE VIVIENDA	
SUPERFICIE CONSTRUIDA	53,70 m ²
P.P. DE ZONAS COMUNES	10,62 m ²
SUPERFICIE TOTAL	64,32 m ²



Representación gráfica sin valor contractual sujeta a posibles cambios derivados del proyecto de ejecución y en cualquier caso será sustituido por el definitivo en el momento de la firma de la compra-venta. La propiedad se reserva los derechos a llevar a cabo modificaciones por motivos técnicos y cumpliendo la normativa vigente.