



C&C INMOASESORES
Servicios inmobiliarios

4 bedroom Villa in Moraira_Teulada

Ref: N6425

€1,695,000



Property type : Villa

Location : Moraira_Teulada

Bedrooms : 4

Bathrooms : 4

Swimming pool : Private

Garden : Private

Views : Sea views

Built surface : 346 m²

Plot surface : 13000 m²

✓ Solarium

✓ Pre-air conditioning

Newly built villa in Teulada with mountain views

On the ground floor we find a large living-dining area and open plan kitchen, master bedroom with walking wardrobe and bathroom, front terrace with access to the pool.

On the first floor is 3 bedrooms with fitted wardrobes, 3 bathrooms en suite.

As well here you have basement of 81m2 with wine cellar.

Villa will be build using high quality materials.

The kitchen will be chosen by the client, kitchen cabinets, worktop and appliances.

Air conditioning with climate control system (condense) in the living rooms and bedrooms. Mitsubishi brand.

The swimming pool will be built with an outdoor shower (hot/cold water connection).

Automatic entrance gate for the cars with remote control and automatic pedestrian door.

Garden to be chosen by the client.

Moraira is a small town with with good restaurants, bars and plenty of supermarkets around.

There is a very pleasant beach right next to town that is great for families.

The seafront offers tremendous views of Penon Ifach across the bay in Calpe. The coast road getting there is well worth doing with some spectacular views.

Moraira situated about 1 hour 15 minutes North up the A7 from Alicante airport its fairly easy to get to. It's about the same distance South from Valencia airport.

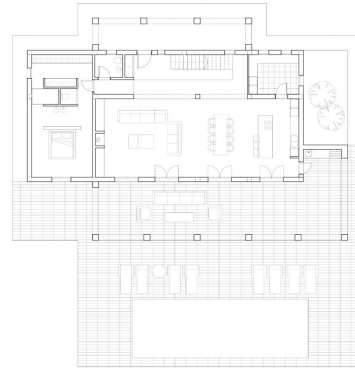


+34 965 067 334

www.cycinmoasesores.com

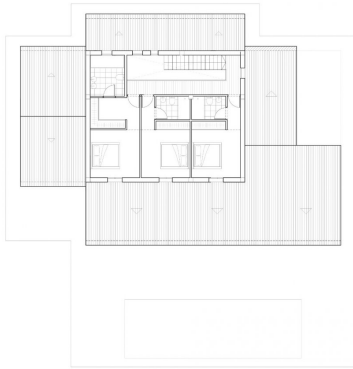


Superficie	Construida
Puerta Baja	148.35 m ²
Vestíbulo	23.84 m ²
Puerta 1	77.07 m ²
Puerta 2	77.07 m ²
Salón	147.05 m ²
Cocina	45.03 m ²
Comedor	45.03 m ²
Puerta Alta	97.05 m ²
Vestíbulo	81.24 m ²
Subterráneo	12.02 m ²



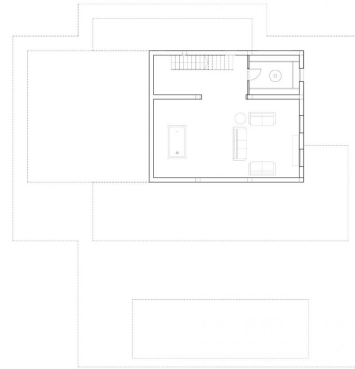
PLANTA BAJA
1:100

Superficie	Construida
Puerta Baja	148.35 m ²
Vestíbulo	23.84 m ²
Puerta 1	77.07 m ²
Puerta 2	77.07 m ²
Salón	147.05 m ²
Cocina	45.03 m ²
Comedor	45.03 m ²
Puerta Alta	97.05 m ²
Vestíbulo	81.24 m ²
Subterráneo	12.02 m ²

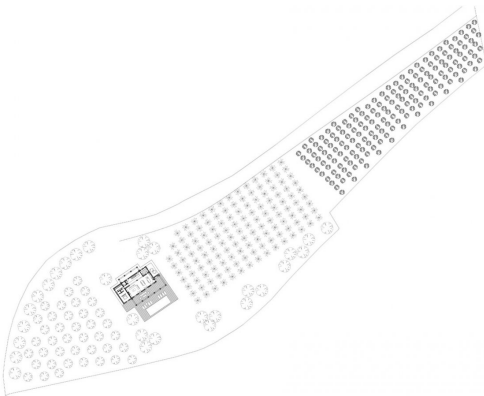


PLANTA ALTA
1:100

Superficie	Construida
Puerta Baja	148.35 m ²
Vestíbulo	23.84 m ²
Puerta 1	77.07 m ²
Puerta 2	77.07 m ²
Salón	147.05 m ²
Cocina	45.03 m ²
Comedor	45.03 m ²
Puerta Alta	97.05 m ²
Vestíbulo	81.24 m ²
Subterráneo	12.02 m ²



PLANTA SÓTANO
1:100



EXPLANIMIENTO
1:100