



C&C INMOASESORES
Servicios inmobiliarios

5 bedroom Villa in Orihuela Costa

Ref: N6821

€970,000



Property type : Villa

Location : Orihuela Costa

Bedrooms : 5

Bathrooms : 5

Swimming pool : Private

Garden : Private

Parking : Garage

Built surface : 422 m²

Plot surface : 918 m²

✓ Solarium

✓ Pre-air conditioning

✓ Jacuzzi

NEW BUILD LUXURY VILLA IN PUNTA PRIMA

Exclusive New Build villa in the prestigious and quiet urbanization of Punta Prima, Orihuela Costa. Villa located 7-minute walk to the beach of Punta Prima.

With a constructed area of 422m² and a 918m² plot, villa has 5 bedrooms, 5 bathrooms, a large living room-kitchen-dining room, a separate laundry room, 2 terraces on the ground floor and first floor, a large multipurpose area in the semi-basement, a garage for two cars and private pool.

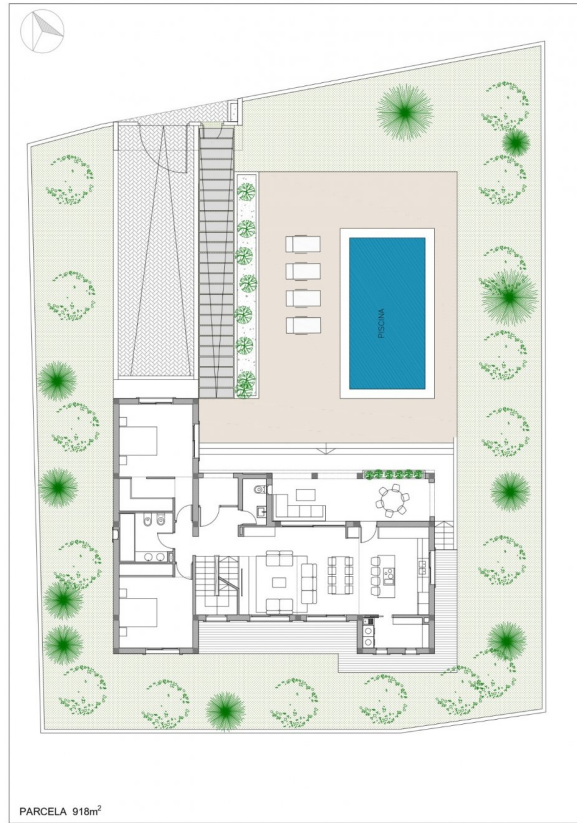
It is under construction at 50%, it is possible to sell under construction or completely finished. The final price may vary depending on the level of finishes.

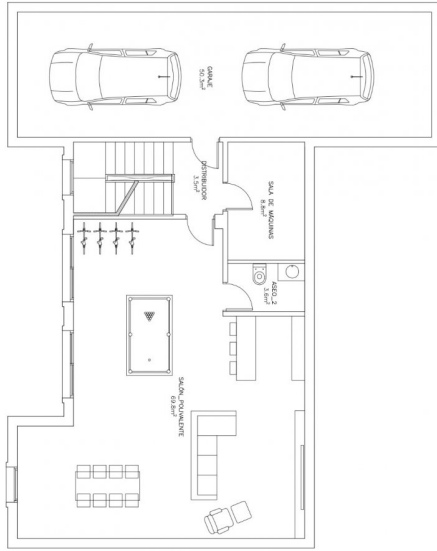
In the surroundings you will find a wide range of nice restaurants, cafes, supermarkets, pharmacies and all the amenities you may need.

Punta Prima, located just 5 km from Torrevieja, is characterized by good communication and health infrastructures, the proximity to Alicante airport, and the number of services open throughout the year.

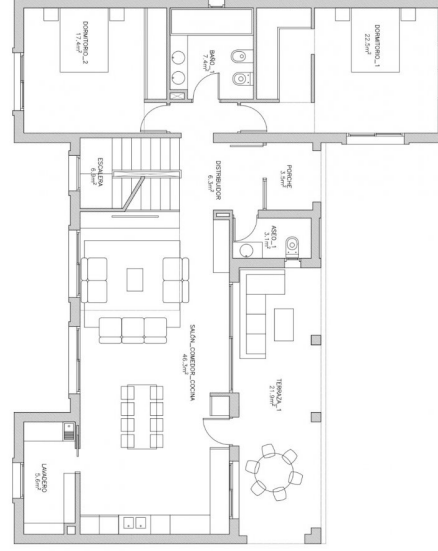
Just 10 km away we can find the golf courses of Villamartín, Campoamor, Las Ramblas, Las Colinas and Lo Romero, as well as the commercial centres of La Zenia and Habaneras.







| CUADRO DE SUPERFICIES TOTALES | | | | | |
|-------------------------------|---------------------|----------------------|--------------------|--------------------------|--------------------|
| DORMITORIO_1 | 22.5m ² | DORMITORIO_3 | 15.1m ² | GARAJE | 50.3m ² |
| BAÑO_1 | 7.4m ² | BAÑO_3 | 5.8m ² | DISTRIBUIDOR | 3.5m ² |
| DORMITORIO_2 | 17.4m ² | VESTIDOR | 5.5m ² | SALA DE MAQUINAS | 8.8m ² |
| DISTRIBUIDOR | 6.3m ² | DISTRIBUIDOR | 14.8m ² | ASEO_2 | 3.0m ² |
| ASEO_1 | 3.1m ² | DORMITORIO_4 | 13.9m ² | SALA POLIVALENTE | 69.8m ² |
| SALON_COMEDOR_COCHINA | 46.3m ² | DORMITORIO_5 | 13.4m ² | | |
| ESCALERA | 6.9m ² | BAÑO_4 | 14.1m ² | | |
| LAUNDERO | 3.6m ² | TERRAZA_1 | 31.3m ² | | |
| PORCHE | 3.5m ² | | | | |
| TERRAZA_1 | 21.9m ² | | | | |
| SUP. ÚTIL INTERIOR | 115.5m ² | SUP. ÚTIL INTERIOR | 82.4m ² | SUP. ÚTIL INTERIOR | 85.7m ² |
| SUP. ÚTIL EXTERIOR | 23.4m ² | SUP. ÚTIL EXTERIOR | 51.3m ² | SUP. ÚTIL EXTERIOR | 50.3m ² |
| SUP. ÚTIL INTERIOR TOTAL | | 283.6m ² | | SUP. ÚTIL INTERIOR TOTAL | |
| SUP. ÚTIL EXTERIOR TOTAL | | 76.7m ² | | SUP. ÚTIL EXTERIOR TOTAL | |
| SUP. GARAJE | | 50.3m ² | | SUP. GARAJE | |
| SUPERFICIE PARCELA | | 919.0m ² | | SUPERFICIE PARCELA | |
| SUPERFICIE CONSTR. TOTAL | | 422.46m ² | | SUPERFICIE CONSTR. TOTAL | |



| CUADRO DE SUPERFICIES TOTALES | | | | | |
|-------------------------------|---------------------|----------------------|--------------------|--------------------------|--------------------|
| DORMITORIO_1 | 22.5m ² | DORMITORIO_3 | 15.1m ² | GARAJE | 50.3m ² |
| BAÑO_1 | 7.4m ² | BAÑO_3 | 5.8m ² | DISTRIBUIDOR | 3.5m ² |
| DORMITORIO_2 | 17.4m ² | VESTIDOR | 5.5m ² | SALA DE MAQUINAS | 8.8m ² |
| DISTRIBUIDOR | 6.3m ² | DISTRIBUIDOR | 14.8m ² | ASEO_2 | 3.0m ² |
| ASEO_1 | 3.1m ² | DORMITORIO_4 | 13.9m ² | SALA POLIVALENTE | 69.8m ² |
| SALON_COMEDOR_COCHINA | 46.3m ² | DORMITORIO_5 | 13.4m ² | | |
| ESCALERA | 6.9m ² | BAÑO_4 | 14.1m ² | | |
| LAUNDERO | 3.6m ² | TERRAZA_1 | 31.3m ² | | |
| PORCHE | 3.5m ² | | | | |
| TERRAZA_1 | 21.9m ² | | | | |
| SUP. ÚTIL INTERIOR | 115.5m ² | SUP. ÚTIL INTERIOR | 82.4m ² | SUP. ÚTIL INTERIOR | 85.7m ² |
| SUP. ÚTIL EXTERIOR | 23.4m ² | SUP. ÚTIL EXTERIOR | 51.3m ² | SUP. ÚTIL EXTERIOR | 50.3m ² |
| SUP. ÚTIL INTERIOR TOTAL | | 283.6m ² | | SUP. ÚTIL INTERIOR TOTAL | |
| SUP. ÚTIL EXTERIOR TOTAL | | 76.7m ² | | SUP. ÚTIL EXTERIOR TOTAL | |
| SUP. GARAJE | | 50.3m ² | | SUP. GARAJE | |
| SUPERFICIE PARCELA | | 919.0m ² | | SUPERFICIE PARCELA | |
| SUPERFICIE CONSTR. TOTAL | | 422.46m ² | | SUPERFICIE CONSTR. TOTAL | |